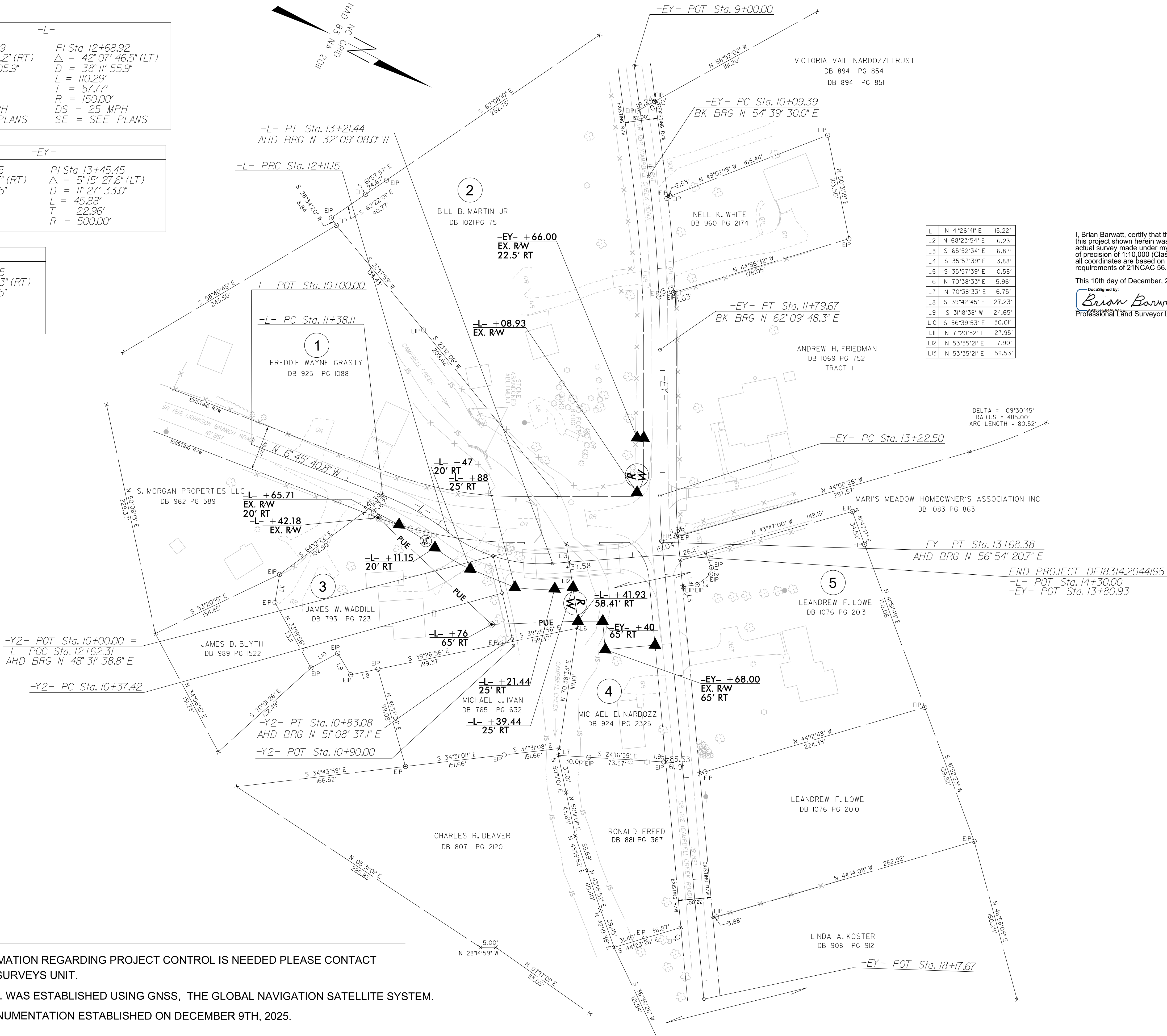


REVISIONS

-L-	
PI Sta 11+74.89	PI Sta 12+68.92
$\Delta = 16^{\circ}44'19.2''$ (RT)	$\Delta = 42^{\circ}07'46.5''$ (LT)
D = 22'55"05.9"	D = 38'11"55.9"
L = 73.04'	L = 110.29'
T = 36.78'	T = 57.77'
R = 250.00'	R = 150.00'
DS = 25 MPH	DS = 25 MPH
SE = SEE PLANS	SE = SEE PLANS

-EY-	
PI Sta 10+94.65	PI Sta 13+45.45
$\Delta = 7^{\circ}30'18.3''$ (RT)	$\Delta = 5^{\circ}15'27.6''$ (LT)
D = 4'24"26.5"	D = 11'27"33.0"
L = 170.29'	L = 45.88'
T = 85.26'	T = 22.96'
R = 1,300.00'	R = 500.00'

-Y2-	
PI Sta 10+60.25	
$\Delta = 2^{\circ}36'58.3''$ (RT)	
D = 5'43"46.5"	
L = 45.66'	
T = 22.83'	
R = 1,000.00'	



L1	N 41°26'41" E	15.22'
L2	N 68°23'54" E	6.23'
L3	S 65°52'34" E	16.87'
L4	S 35°57'39" E	13.88'
L5	S 35°57'39" E	0.58'
L6	N 70°38'33" E	5.96'
L7	N 70°38'33" E	6.75'
L8	S 39°42'45" E	27.23'
L9	S 31°18'38" W	24.65'
L10	S 56°39'53" E	30.01'
L11	N 71°20'52" E	27.95'
L12	N 53°35'21" E	17.90'
L13	N 53°35'21" E	59.53'

I, Brian Barwatt, certify that the right of way and permanent easement monumentation for this project shown herein was completed under my direct and responsible charge from an actual survey made under my supervision; that all horizontal closures had a minimum ratio of precision of 1:10,000 (Class A). Field work was performed on December 9th, 2025, and all coordinates are based on NAD83/2011; That this survey was performed to meet the requirements of 21NCAC 56.1600 as applicable.

This 10th day of December, 2025.
DocuSigned by:
Brian Barwatt
Professional Land Surveyor L-4727

NOTES:

1. IF FURTHER INFORMATION REGARDING PROJECT CONTROL IS NEEDED PLEASE CONTACT THE LOCATION AND SURVEYS UNIT.
2. PROJECT CONTROL WAS ESTABLISHED USING GNSS, THE GLOBAL NAVIGATION SATELLITE SYSTEM.
3. RIGHT OF WAY MONUMENTATION ESTABLISHED ON DECEMBER 9TH, 2025.